

# Smart Color Matching



## WHAT OUR CUSTOMERS ARE SAYING:

*"We provide color matching services to many decorative paint manufacturers, so time and matching quality is of the essence. Using Smart Calibrator and SmartMatch Technology, Match Pigment gets even the darkest and most saturated colors right."*

**Roman Berný**, General Manager  
Replac-BM  
Czech Republic

*"For our application, it's indispensable. Now, we can easily adjust top coat color while adding specific matting agents. As a result, our development costs have reduced by about 50%."*

**A. Souktrat**, Technical Manager  
Langro-Chemie Theo Lang GmbH  
Stuttgart, Germany

## Powerful and Accurate Color Matching Software

**For color professionals in paints, pigments and plastics, Match Pigment offers superior first-shot matches with powerful tools to optimize the cost and quality of recipes.**

**Boost productivity and save time and money with a faster, smarter matching engine.**

**Streamline your color process with one complete solution, backed by global, industry-specific application support.**

## Save time and money with accurate first-shot matches

- Match Pigment delivers up to 80%\* of recipes right the first time using SmartMatch. Now, you can also minimize batch corrections using the same technology. **(New!)**
- Improve first shot matches, even for translucent to near-opaque samples, via Smart Calibrator that auto-determines the best calibration method to use. **(New!)**
- Match Pigment automatically excludes bad calibration samples from calculation, ensuring reliable, high quality recipes. **(New!)**



## Optimize formulas for cost and quality criteria

- Get the best recipe for color, appearance, and opacity with up to 20% cost savings in raw materials using custom sorting criteria.
- Achieve a close correlation to visual appearance by matching an offset to the actual standard (CIE L\*a\*b\* Offset), reducing re-trials due to colorimetric shifts on structured surfaces and production processes in paint, plastic, leather etc. **(New!)**

The screenshot shows the Formulate Central software interface. The top window displays a target color match for RAL5015+HR 01/98. The target color is defined by CIE L\*a\*b\* coordinates: L\* = 50.59, a\* = -12.35, b\* = -34.73. The target is compared against a formula (D65/10) and a substrate (A/10). The formula match is shown to be very close to the target.

The bottom window shows a Multi-Formula Display table for the target RAL5015+HR 01/98. The table lists various formula types and their corresponding colorimetric values (L\*, a\*, b\*) for different formula types (T, T, T, T, T, T, T, T, T, T). The table also shows the total batch and total base for the formula.

Formula Type	T	T	T	T	T	T	T	T	T	T
DEI	2.00	1.99	1.98	1.98	1.99	1.99	1.99	1.99	1.99	1.99
CIE LAB L*	2.00	1.99	1.99	1.98	1.99	1.99	1.99	1.99	1.99	1.99
CIE LAB a*	0.00	0.01	0.01	0.01	0.01	0.01	0.01	0.01	0.01	0.01
CIE LAB b*	0.01	0.04	0.04	0.04	0.04	0.04	0.05	0.05	0.05	0.05
M	960.00	960.00	960.00	960.00	960.00	960.00	960.00	960.00	960.00	960.00
BLUE	41.00	40.55	45.86	46.04	44.21	42.94	44.95	45.53	45.49	44.97
PURPLE	17.09	13.58			14.09					
YEL (0)	4.44						2.67			
UMBER		7.12						4.78		
VIOLET			15.33	14.66		17.55	17.03	14.31	15.53	16.45
YEL (1)			3.26							
GREEN				4.54	5.82					
Pht GREEN						16.26				
OxYEL									2.66	

\* (based upon laboratory testing with repeatable procedures resulting in dE < 1.0 for typical paint and coatings)

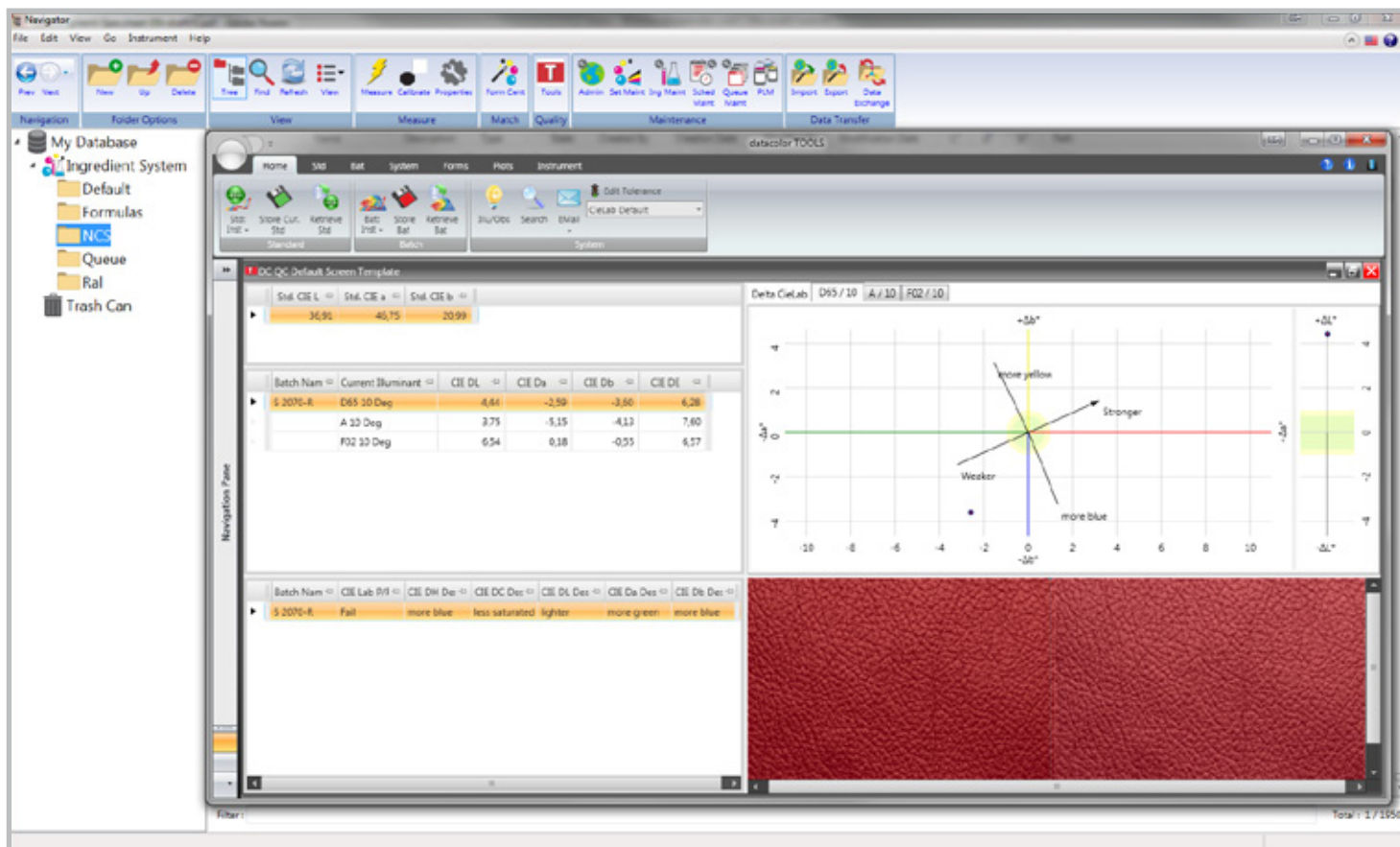
# POWERFUL AND ACCURATE COLOR MATCHING SOFTWARE

## Boost productivity with faster, automated matching

- Up to 150% increase in matching speed\*\* due to a more powerful matching engine with multi-processor capabilities. **(New!)**
- Automate high volume color processes by 'Queue Matching' multiple samples.
- Quickly find the best match for every sample in the Queue by setting multiple matching preferences.

## Improve efficiency with network color management

- Share core colorants and re-use existing recipes between labs and factories via enterprise level deployment of affordable server version.
- Centralize control of digital master standards and maintain best practices.
- Windows Server 2008 and 2012 compatible with Terminal Server and Citrix support. **(New!)**

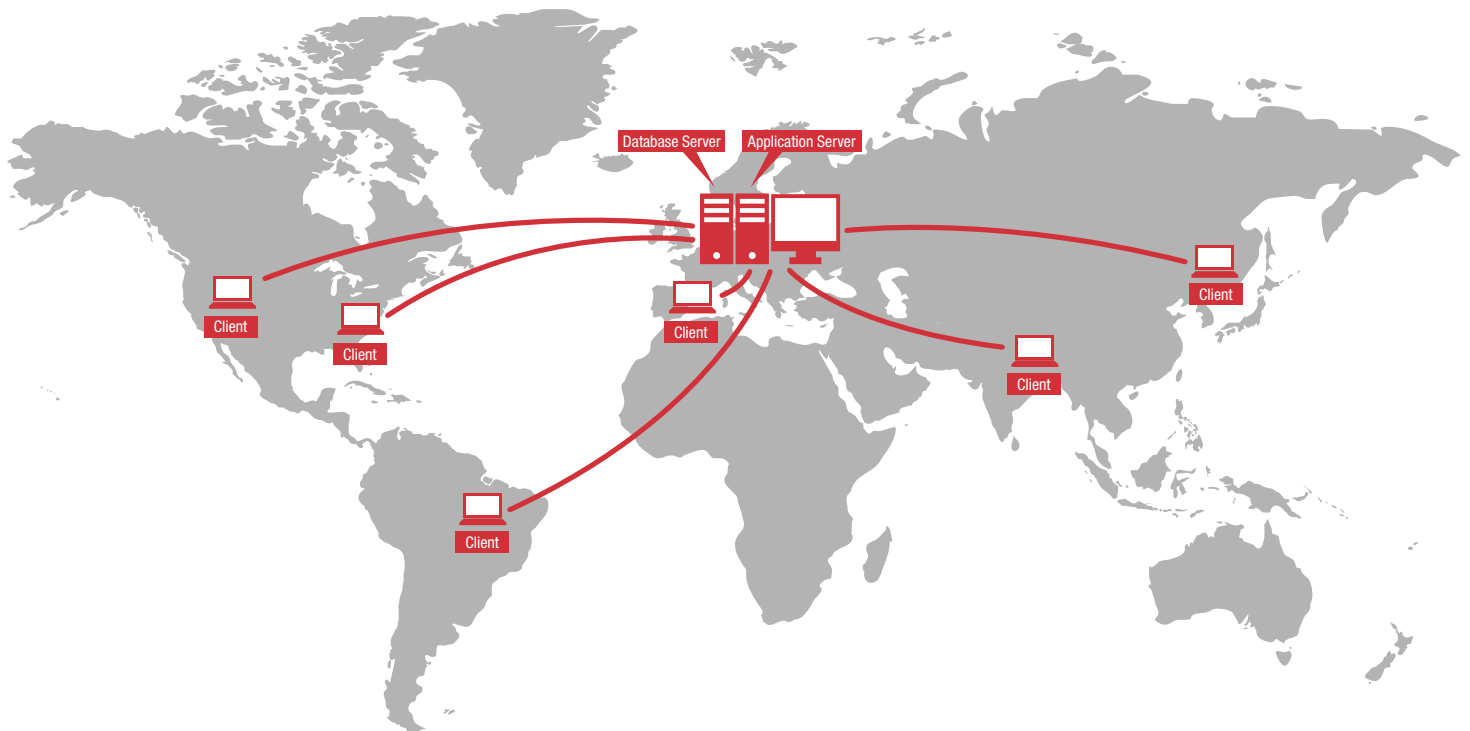


## Streamline your color process with one complete solution

- Match, Correct, Scale, Sort, Produce and Quality Control (QC) using one complete software. Now with a faster, more intuitive workflow guided by Data Navigator. **(New!)**
- Build new product lines, electronic formula books, and re-formulate fan decks for point-of-sale systems.
- Global, industry-specific application support, including customized training, user courses, and turnkey database services.

\*\* (based upon recipes using 1 to 5 ingredients from 16 colorants on a 4-processor system or higher)

FEATURES COMPARISON	DATACOLOR MATCH <sup>PIGMENT</sup> PLUS	DATACOLOR MATCH <sup>PIGMENT</sup> PLUS WORKSTATION	DATACOLOR MATCH <sup>PIGMENT</sup>
Match Color and Opacity Simultaneously	✓	✓	✓
Intuitive Data Navigation with User Management	✓	✓	✓
Optimize, Score and Sort Recipes	✓	✓	✓
Colorant Set Calibration and Administration	✓	-	✓
Smart Calibration	✓	-	-
SmartMatch Technology	✓	✓	-
CIE L*a*b* Offset Match	✓	✓	-
Ingredient Priority and Compatibility	✓	✓	-
Queue Function	✓	✓	-
Product Line Maintenance	✓	✓	-
Auto Base Selection	✓	✓	-
Data Exchange with Retail PAINT	✓	✓	-
Network Color Management*	✓	✓	-
Integrated Quality Control	Datacolor TOOLS Plus	Datacolor TOOLS Plus	Datacolor TOOLS Basic
Global Industry-specific Application Support	✓	✓	✓



*Network Color Management enabled via Terminal-Server installations of Datacolor Match Pigment Plus and Datacolor Match Pigment Plus Workstation versions over local or wide area networks.*

For more information, please visit [www.datacolor.com/matchpigment](http://www.datacolor.com/matchpigment)

#### STANDALONE SYSTEM REQUIREMENTS

Dual Core Processor @ 2 GHz or faster; 4 GB or more RAM; 500 GB HDD; Video 512 MB with 1024x768 Resolution or higher; DVD Drive; USB/Serial Port; Windows 7 / Windows 8

#### TERMINAL SERVER SYSTEM REQUIREMENTS

2 GHz or faster, 1 core / concurrent user; 4 GB RAM plus 256 MB / concurrent user; 500 GB RAID 5 HDD; Video 512 MB with 1024x768 Resolution or higher; DVD Drive; USB/Serial Port; Windows Server 2008 / Windows Server 2012, Gigabit or faster